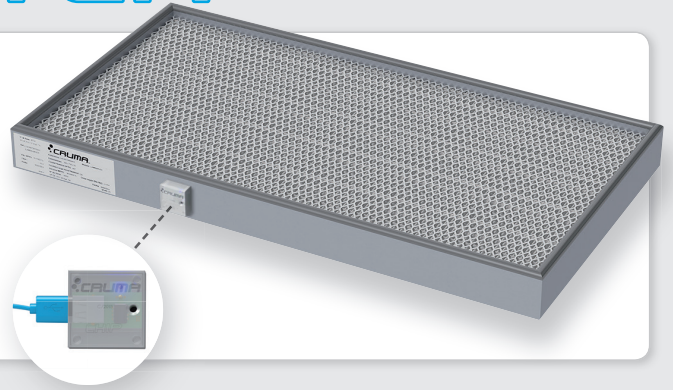


CRUMA-D FILTER

Particle filter type HEPA (high efficiency particulate air) H14. These filters are especially suitable when the products handled are in solid state or produce mists like the case of hydrochloric acid.

Through the mechanisms of interception, impact and diffusion the percentage of retention of this filter is greater than 99.995% of filtered particles. The particles with size of 0.3 µm are the ones that have the maximum penetration in front of these 3 mechanisms.

Filter equipped with an electronic device to control the hours of life and the expiration date.

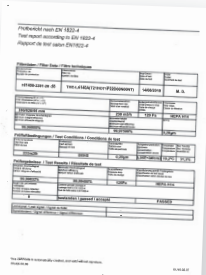


FILTERING SYSTEM

The flow to be treated enters from the lower part of the filter, passes through a mesh of randomly arranged glass fibers, retaining the particles through the mechanisms of interception, impact and diffusion. After this, the air leaves from the upper part of the filter with a more proportioned air flow than in the inlet. This factor is very important if an activated carbon filter is placed after the hepa filter.

QUALITY

Each filter is supplied with a quality control certificate that mentions the serial number, the initial pressure drop and the efficiency. The filter has been subjected to a test according to the EN 1822 standard.



STRUCTURE

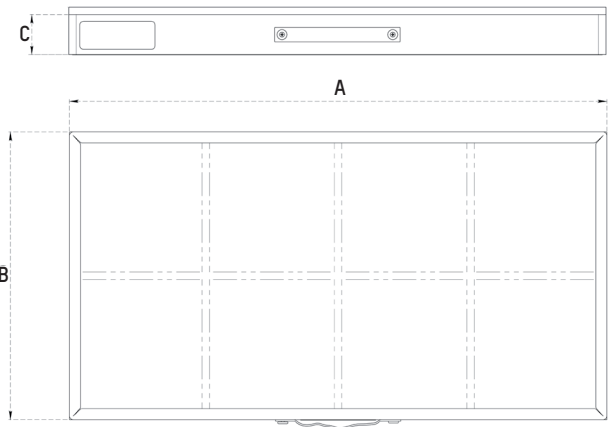
Galvanized steel or aluminum, depending on the chosen model.

WASTE MANAGEMENT

Code EWC 150202-150203

Non-contractual technical data. CRUMA reserves the right to modify the present document without prior notice.

All the trademarks mentioned in this document belong to their respective owner.



TECHNICAL FEATURES

Type of filter	HEPA H14		
References of Cruma range	Reference	Sizes (AxBxC)	Weight
	FL001	728x390x55	3,5 Kg
	FL002	528x390x55	3 Kg
	FL003	700x480x69	5 Kg
	FL004	1100x480x69	8 Kg
	FL005	822x665x69	8 Kg
	FL006	1220x665x69	11 Kg
Initial pressure drop	120 Pa		
Nominal flow rate	320 m ³ /h		
Filter efficiency	99,995%		
Size of the seal	10 mm		
Manufacturing materials	Galvanized steel or aluminum, depending on the chosen model		
Electronics	USB device with data of expiry date		
Product shelf life	5 years		

Information and storage

This filter must be stored in its original packaging, in a plain and dry place



Look at the info supplied by the manufacturer



Expiry date
yyy/mm



Direction of flow of inhaled air



Maximum humidity of storage
cxx%



Storage temperature range
-xx °C +yy °C

Warnings

Handle by the edges to avoid damaging the filtering surface.

At the time of filter the change, do not shake.



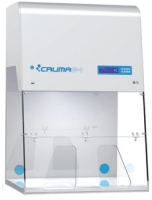
Do you need technical assistance?

Our technical assistance service gives answers and solutions everywhere; Ask us if you have any question or need replacements, revisions, maintenance, etc.

+34 93 370 61 62



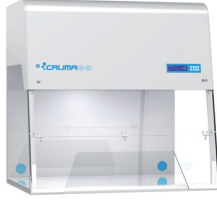
CRUMA
PLUG&PLAY RANGE



G-1



G-2



G-3



G-4



G-5

CRUMA
CLASSIC RANGE



670



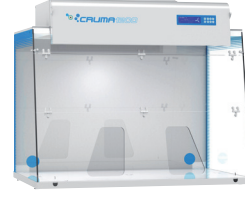
870



990



1010



1200



ECO



CRUMA
VENTED STORAGE
CUPBOARDS

2010

CRUMA
POWDER CABINETS

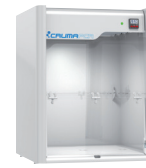


P-1



P-2

CRUMA
PCR CABINET



PCR

CRUMA
CO₂ INCUBATOR



INCUBATOR

CRUMA
LAMINAR FLOW CABINETS



670FL



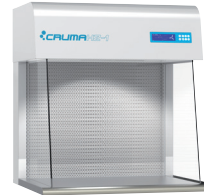
870FL



FL1



FL2



H2-1

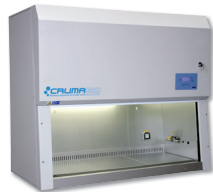


H2-2

CRUMA
BIOSAFETY CABINETS



BIO-1



BIO-2



VIRUSFREE



CYTO-2&3

DISTRIBUTED BY: